

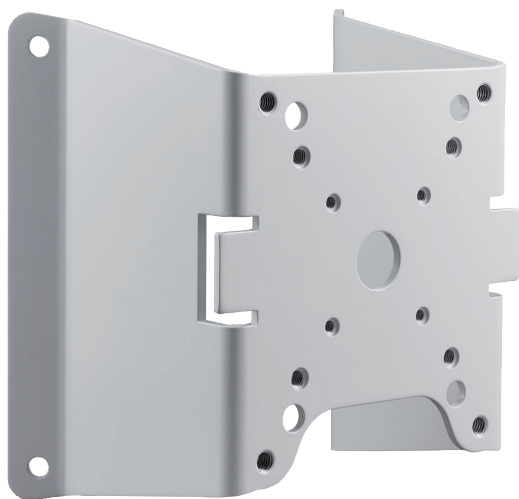
NDA-U-CMT Corner mount adapter

www.boschsecurity.com



BOSCH

Invented for life



- ▶ For installation of Bosch cameras to an external corner
- ▶ Modular design for fast and easy installation
- ▶ Weather resistant finish to maintain cosmetic appearance

The modular camera mounts & accessories are a family of mounts, mounting adapters, pendant interface plates and surveillance cabinets which can be used with a wide range of Bosch cameras. The accessories are easy to install and can be combined to simplify installation in multiple locations whilst retaining the same look and feel.

Functions

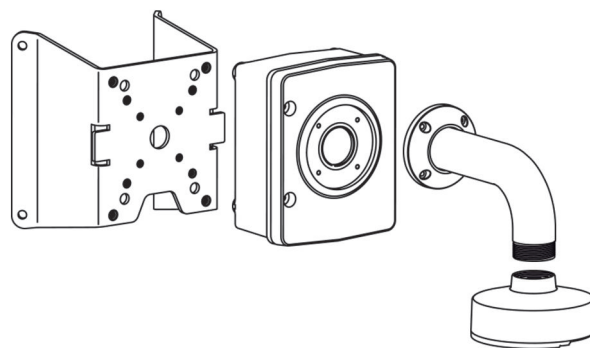
Corner mount adapter

This corner mount adapter enables installation on external corners. It provides a safe and robust solution to mount cameras together with the following accessories.

Universal accessory combinations

It provides a safe and robust solution to mount cameras together with the following accessories.

- NDA-U-WMT Pendant wall mount
- NDA-U-WMP Wall mount plate
- NDA-U-PA0/1/2 Surveillance cabinet
- NDA-U-PSMB Pendant wall/ceiling mount SMB



Certifications and approvals

Environmental

| | |
|-----------|---------------|
| Salt mist | IEC60068-2-52 |
| Impact | IK10 |

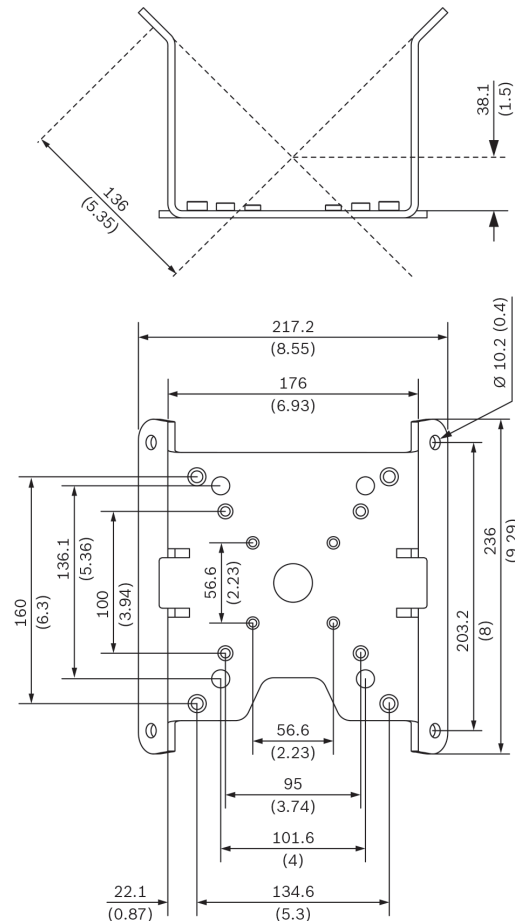
Parts included

| Quantity | Component |
|----------|-----------------------------------|
| 1 | Corner mount |
| 4 | M6 x 20 mm Hex screw |
| 4 | M6 spring washer |
| 4 | M6 washer |
| 4 | 3/8 inch-16 x 1.75 inch Hex screw |
| 4 | 3/8 inch spring washer |
| 1 | Quick Installation Guide |

Technical specifications

Mechanical

| | |
|------------------------|--|
| Dimensions (W x H x D) | 219 x 236 x 148 mm (8.6 x 9.3 x 5.8 in) |
| Weight | 1192 g (2.63 lb) |
| Standard Color | White (RAL 9003) |
| Construction Material | Aluminum alloy |



NDA-U-CMT Corner mount adapter
Dimensions in mm (inch)

Ordering information

NDA-U-CMT Corner mount adapter
Universal corner mount, white
Order number **NDA-U-CMT**

Accessories

NDA-U-PA0 Surveillance cabinet 24VAC
Surveillance cabinet, 24 VAC input, 24 VAC output, IP66
Order number **NDA-U-PA0**

NDA-U-PA1 Surveillance cabinet 120VAC
Surveillance cabinet, 120 VAC input, 24 VAC output, IP66
Order number **NDA-U-PA1**

NDA-U-PA2 Surveillance cabinet 230VAC
Surveillance cabinet, 230 VAC input, 24 VAC output, IP66
Order number **NDA-U-PA2**

NDA-U-PSMB Pendant wall/ceiling mount SMB
Surface mount box (SMB) for wall mount or pipe mount.
Order number **NDA-U-PSMB**

NDA-U-WMP Wall mount plate

Back plate for universal wall mount, corner mount and pole mount, white, IP66
Order number **NDA-U-WMP**

NDA-U-WMT Pendant wall mount

Universal wall mount for dome cameras, white
Order number **NDA-U-WMT**

Represented by:

Europe, Middle East, Africa:
Bosch Security Systems B.V.
P.O. Box 80002
5600 JB Eindhoven, The Netherlands
Phone: + 31 40 2577 284
emea.securitysystems@bosch.com
emea.boschsecurity.com

Germany:
Bosch Sicherheitssysteme GmbH
Robert-Bosch-Ring 5
85630 Grasbrunn
Germany
www.boschsecurity.com

North America:
Bosch Security Systems, Inc.
130 Perinton Parkway
Fairport, New York, 14450, USA
Phone: +1 800 289 0096
Fax: +1 585 223 9180
onlinehelp@us.bosch.com
www.boschsecurity.us

Asia-Pacific:
Robert Bosch (SEA) Pte Ltd, Security Systems
11 Bishan Street 21
Singapore 573943
Phone: +65 6571 2808
Fax: +65 6571 2699
apr.securitysystems@bosch.com
www.boschsecurity.asia